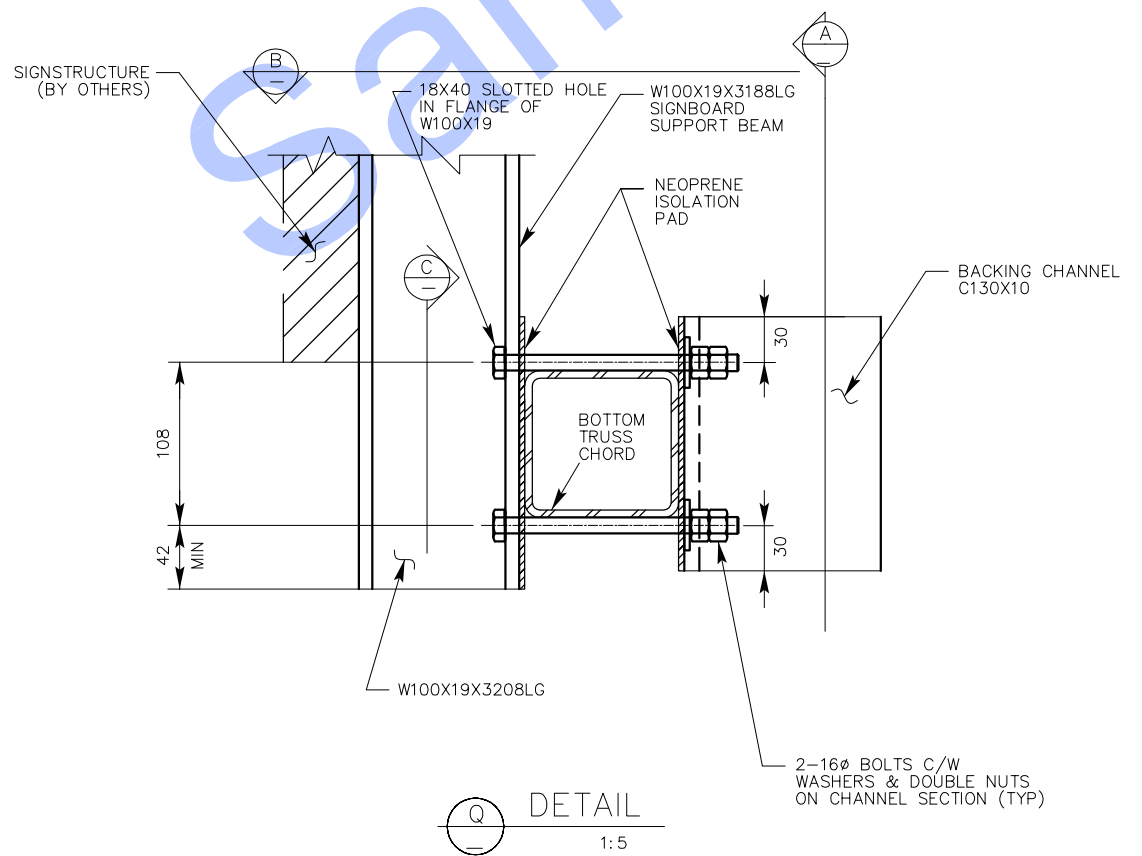
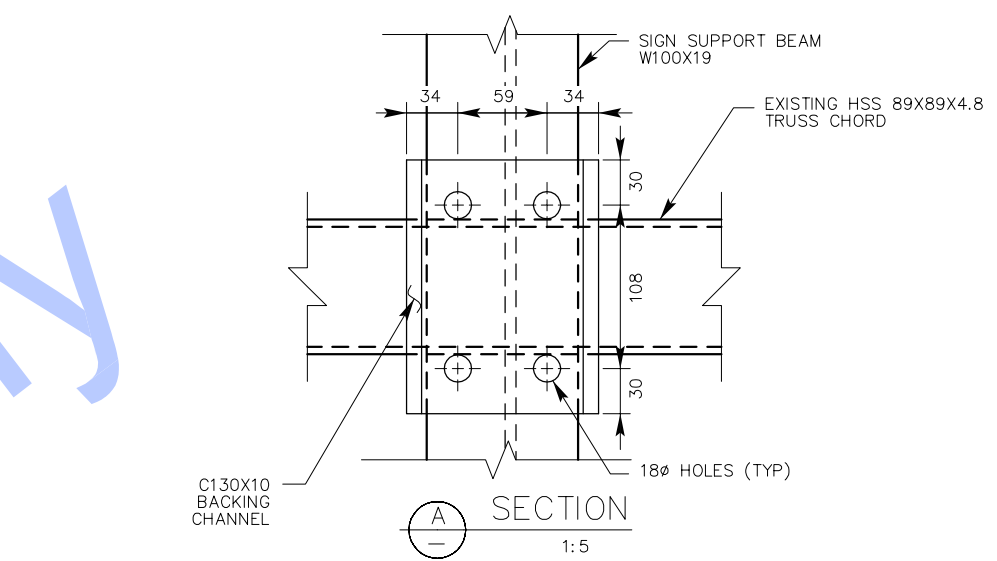


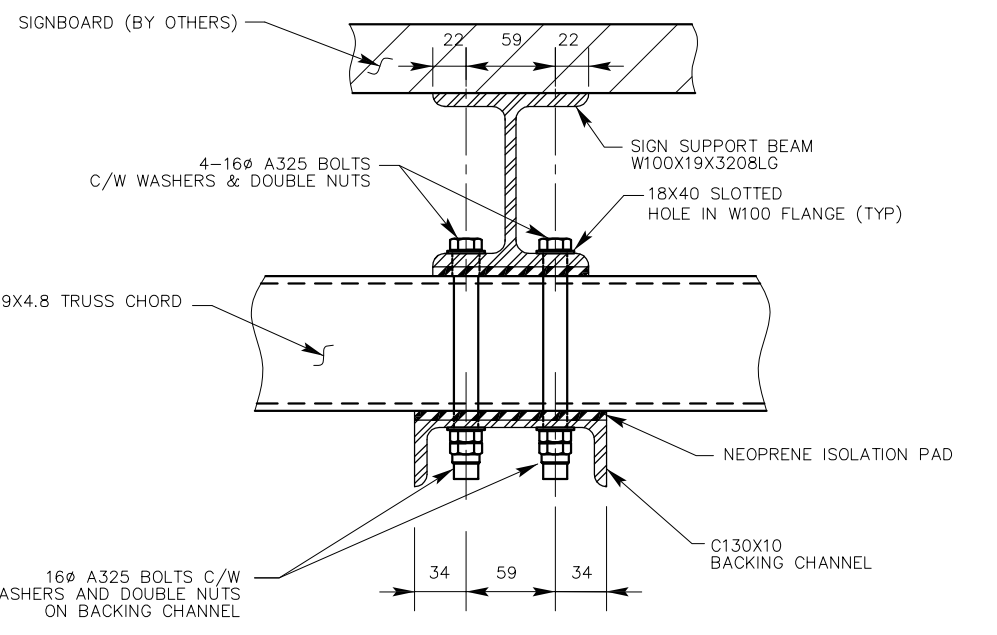
DETAIL S
1:5



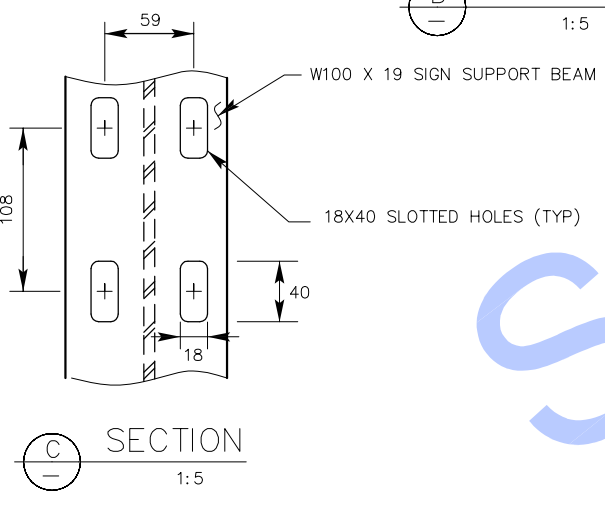
DETAIL Q
1:5



SECTION A
1:5



SECTION B
1:5



SECTION C
1:5

GENERAL NOTES

- DIMENSIONS IN MILLIMETRES UNLESS NOTED OTHERWISE
- THE DETAILS PROVIDED ON THIS DRAWING SUPERCEDE DETAIL S AND DETAIL Q SHOWN ON THE LATEST VERSION OF STANDARD DRAWING S-1610
- WORK THIS DRAWING IN CONJUNCTION WITH THE LATEST VERSIONS OF STANDARD DRAWINGS S-1607, S-1608, S-1609

DESIGN

- STRUCTURAL DESIGN IN ACCORDANCE WITH CAN/CSA-S6-06 AND SPECIFIC TO BRIDGE FILE 86043ZE AND 80946ZW NEAR VEGREVILLE FOR ULS COMBINATION A1 AND A3 SO AS TO OBTAIN THE MAXIMUM LOAD EFFECTS
- DEAD LOAD: WEIGHT OF SIGNBOARD AND SIGN SUPPORT BEAM 1.31 KN/M (FACTORED)
- WIND LOAD: 2.0 kPa HORIZONTAL (FACTORED) 0.8 kPa VERTICAL (FACTORED)
- ICE LOAD: 12 MM THICKNESS (UNFACTORED) APPLIED TO ONE FACE OF SIGNBOARD AREA AND SURFACE AREA OF SIGN SUPPORT BEAMS

MATERIALS

- ALL CONNECTION DETAIL STEEL SHAPES SHALL CONFORM TO CSA G40.21M-300W
- BOLTED CONNECTIONS SHALL BE MADE WITH ASTM A325 BOLTS
- NEOPRENE ISOLATION PADS SHALL BE A MINIMUM 2 MILLIMETERS THICK AND MEET NEOPRENE 60 DUROMETER HARDNESS
- ALL STEEL, STEEL HARDWARE, BOLTS, NUTS AND WASHERS SHALL BE HOT DIP GALVANIZED AFTER FABRICATION IN ACCORDANCE WITH ASTM A123 OR A153 AS APPLICABLE

FABRICATION

- FABRICATION SHALL BE IN ACCORDANCE WITH THE LATEST VERSION OF ALBERTA TRANSPORTATIONS SPECIFICATIONS FOR BRIDGE CONSTRUCTION
- ALL HOLES SHALL BE SHOP DRILLED. FLAME CUTTING IS NOT ACCEPTABLE

C:\A Designs Inc\Projects\Ecospan Solutions Inc\Drawings\ADI-DETAILS-SK-01-2009

ECOSPAN SOLUTIONS INC.
 ECOSpan Solutions Inc.
 7105 -104 Street
 Edmonton, Alberta T6E 4B7
 Ph: (780)432-2490
 Fax: (780)432-2491
 www.ecospan.ca

△			
△			
△			
△			
△			
△	2009-03-18	ISSUED FOR CONSTRUCTION	CW
REV	DATE	REVISIONS	BY

PERMIT TO PRACTICE
 ECOSPAN SOLUTIONS INC.
 Signature _____
 Date _____
 PERMIT NUMBER: P10308
 The Association of Professional Engineers,
 Geologists and Geophysicists of Alberta.

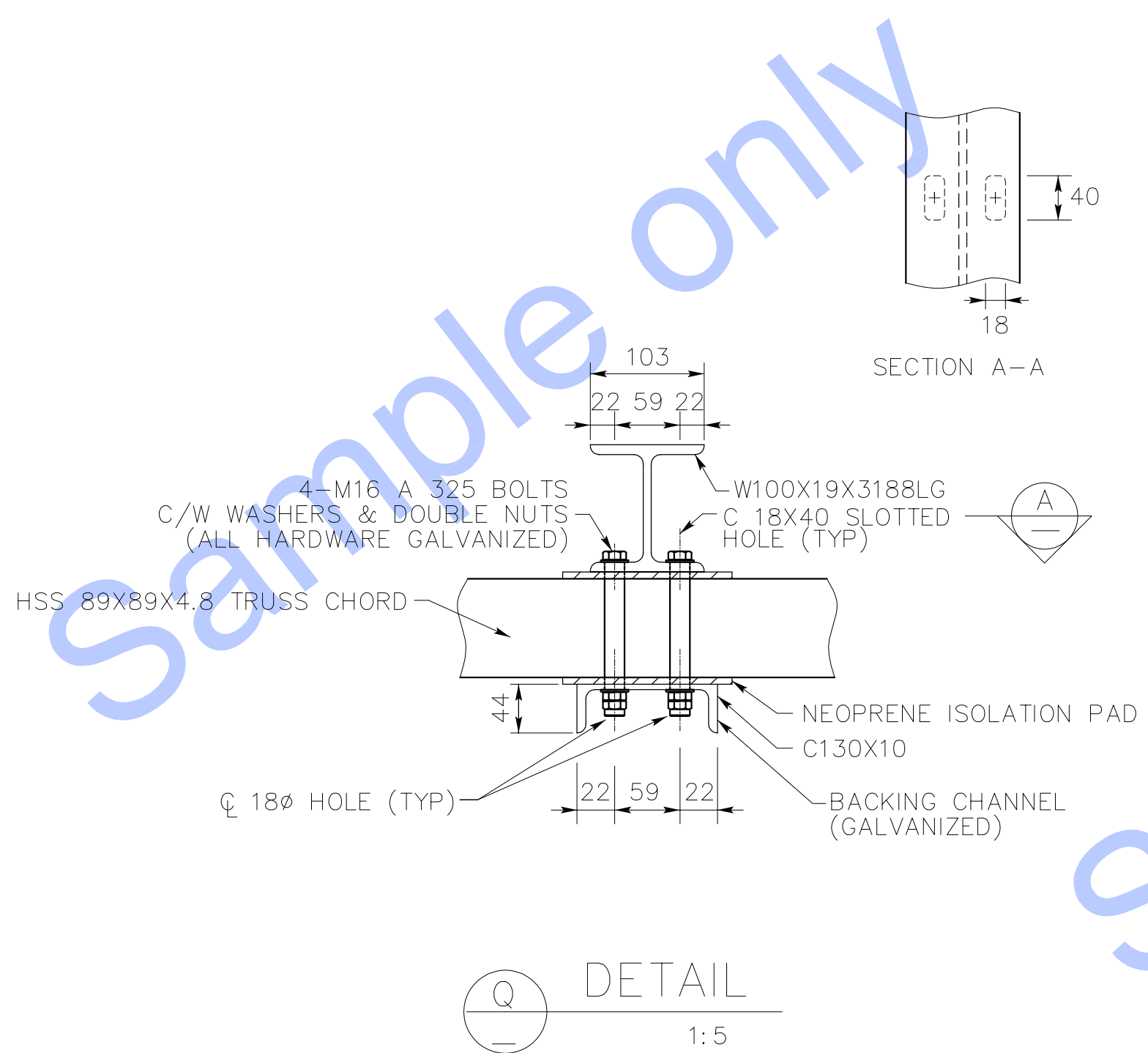
DESIGNER

 DATE _____
 STREAM _____

TRANSPORTATION SYSTEMS MANAGEMENT INC.
Alberta Transportation
 STANDARD SIGN TRUSS
 MODIFIED SIGNBOARD
 CONNECTION DETAILS

DEPARTMENT BAR CODE	DATE	LOCATION	HIGHWAY	FILE	SHEET	DRAWING
	2009-03-18				1 OF 1	SK-01

C:\A Designs Inc\Projects\Ecospan Solutions Inc\Drawings\Working\ADI-DETAIL-Q-SK01-2009



GENERAL NOTES

- DIMENSIONS IN MILLIMETRES UNLESS NOTED OTHERWISE
- THE DETAILS PROVIDED ON THIS DRAWING SUPERCEDE DETAIL S AND DETAIL Q SHOWN ON THE LATEST VERSION OF STANDARD DRAWING S-1610
- WORK THIS DRAWING IN CONJUNCTION WITH THE LATEST VERSIONS OF STANDARD DRAWINGS S-1607, S-1608 , S-1609

DESIGN

- STRUCTURAL DESIGN IN ACCORDANCE WITH CAN/CSA-S6-06 AND SPECIFIC TO BRIDGE FILE 86043ZE AND 80946ZW NEAR VEGREVILLE FOR ULS COMBINATION A1 AND A3 SO AS TO ABTAIN THE MAXIMUM LOAD EFFECTS
- DEAD LOAD:
WEIGHT OF SIGNBOARD AND SIGN SUPPORT BEAM 1.31 KN/M (FACTORED)
- WIND LOAD:
2.0 kPa HORIZONTAL (FACTORED)
0.8 kPa VERTICAL (FACTORED)
- ICE LOAD:
12 MM THICKNESS (UNFACTORED) APPLIED TO ONE FACE OF SIGNBOARD AREA AND SURFACE AREA OF SIGN SUPPORT BEAMS

MATERIALS

- ALL IN CONNECTION DETAIL STEEL SHAPES SHALL CONFORM TO CSA G40.21M-300W TO CSA G40.21M-300W
- BOLTED CONNCTIONS SHALL BE MADE WITH ASTM A325 BOLTS
- NEOPRENE ISOLATION PADS SHALL BE A MINIMUM 2 MILLIMETERS THICK AND MEET NEOPRENE 60 DUROMETER HARDNESS
- ALL STEEL, STEEL HARDWARE, BOLTS, NUTS AND WAHSERS SHALL BE HOT DIP GALVANIZED AFTER FABRICATION IN ACCORDANCE WITH ASTM A123 OR A153 AS APPLICABLE

FABRICATION

- FABRICATION SHALL BE IN ACCORDANCE WITH THE LATEST VERSION OF ALBERTA TRANSPORTATIONS SPECIFICATIONS FOR BRIDGE CONSTRUCTION
- ALL HOLES SHALL BE SHOP DRILLED. FLAME CUTTING IS NOT ACCEPTABLE

ECOSPAN SOLUTIONS INC.
 ECOSpan Solutions Inc.
 7105 -104 Street
 Edmonton, Alberta T6E 4B7
 Ph: (780)432-2490
 Fax: (780)432-2491
 www.ecospan.ca

△			
△			
△			
△			
△	2009-03-17	ISSUED FOR CONSTRUCTION	CW
REV	DATE	REVISIONS	BY

PERMIT TO PRACTICE
 ECOSPAN SOLUTIONS INC.
 Signature _____
 Date _____
 PERMIT NUMBER: P10308
 The Association of Professional Engineers,
 Geologists and Geophysicists of Alberta

DESIGNER

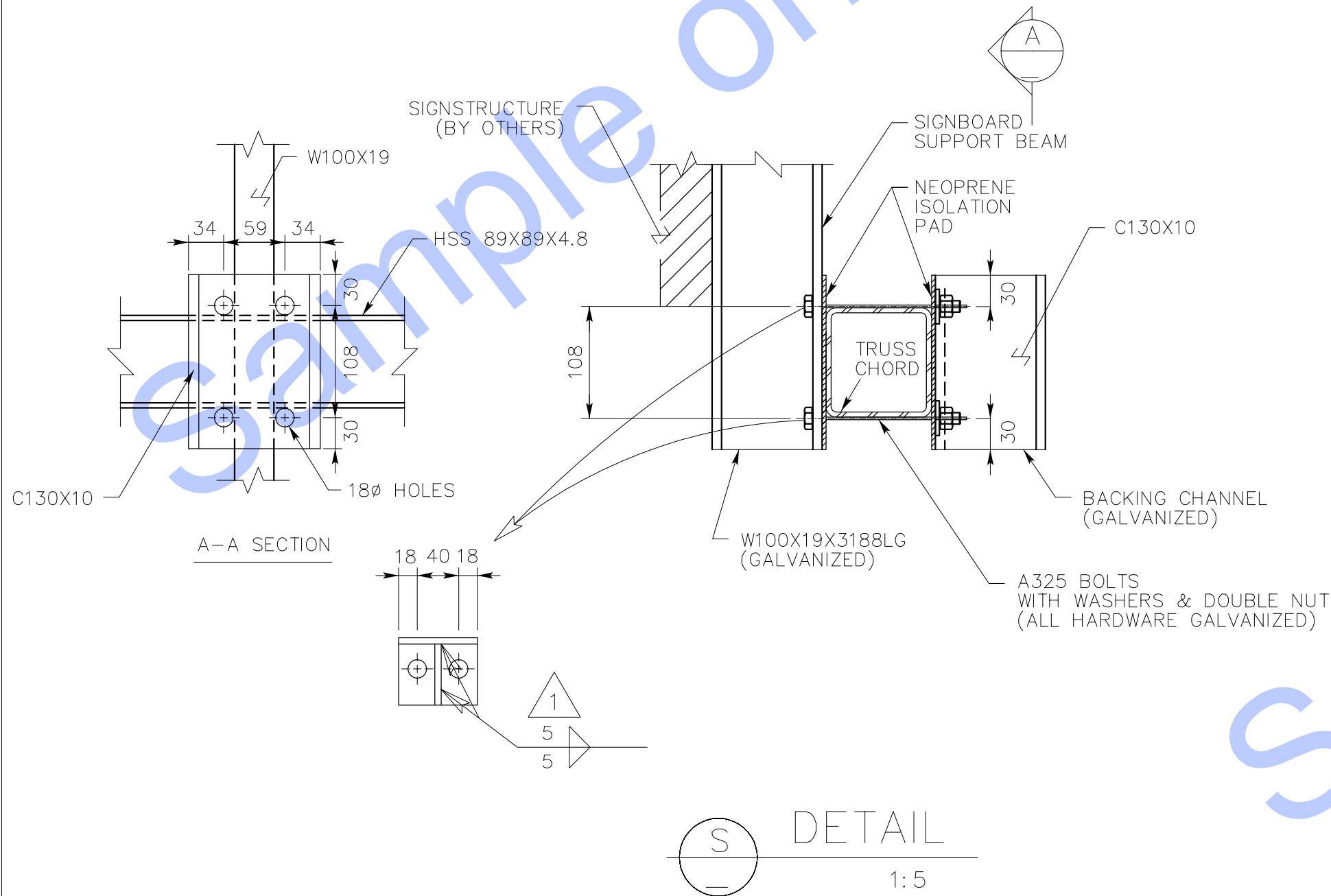
 DATE _____
 STREAM _____

TRANSPORTATION SYSTEM MANAGEMENT INC.

 STANDARD SIGN TRUSS
 MODIFIED SIGNBOARD
 CONNECTION DETAIL

DEPARTMENT BAR CODE	DATE	STREAM	LOCATION	HIGHWAY	FILE	SHEET	DRAWING
	2009-03-13					1 OF 1	SK-01

C:\A Designs Inc\Projects\Ecospan Solutions Inc\Drawings\Working\ADI-DETAIL S-SK02-2009



GENERAL NOTES

- DIMENSIONS IN MILLIMETRES UNLESS NOTED OTHERWISE
- THE DETAILS PROVIDED ON THIS DRAWING SUPERCEDE DETAIL S AND DETAIL Q SHOWN ON THE LATEST VERSION OF STANDARD DRAWING S-1610
- WORK THIS DRAWING IN CONJUNCTION WITH THE LATEST VERSIONS OF STANDARD DRAWINGS S-1607, S-1608 , S-1609

DESIGN

- STRUCTURAL DESIGN IN ACCORDANCE WITH CAN/CSA-S6-06 AND SPECIFIC TO BRIDGE FILE 86043ZE AND 80946ZW NEAR VEGREVILLE FOR ULS COMBINATION A1 AND A3 SO AS TO OBTAIN THE MAXIMUM LOAD EFFECTS
- DEAD LOAD:
WEIGHT OF SIGNBOARD AND SIGN SUPPORT BEAM 1.31 KN/M (FACTORED)
- WIND LOAD:
2.0 kPa HORIZONTAL (FACTORED)
0.8 kPa VERTICAL (FACTORED)
- ICE LOAD:
12 MM THICKNESS (UNFACTORED) APPLIED TO ONE FACE OF SIGNBOARD AREA AND SURFACE AREA OF SIGN SUPPORT BEAMS

MATERIALS

- ALL IN CONNECTION DETAIL STEEL SHAPES SHALL CONFORM TO CSA G40.21M-300W TO CSA G40.21M-300W
- BOLTED CONNECTIONS SHALL BE MADE WITH ASTM A325 BOLTS
- NEOPRENE ISOLATION PADS SHALL BE A MINIMUM 2 MILLIMETERS THICK AND MEET NEOPRENE 60 DUROMETER HARDNESS
- ALL STEEL, STEEL HARDWARE, BOLTS, NUTS AND WASHERS SHALL BE HOT DIP GALVANIZED AFTER FABRICATION IN ACCORDANCE WITH ASTM A123 OR A153 AS APPLICABLE

FABRICATION

- FABRICATION SHALL BE IN ACCORDANCE WITH THE LATEST VERSION OF ALBERTA TRANSPORTATIONS SPECIFICATIONS FOR BRIDGE CONSTRUCTION
- ALL HOLES SHALL BE SHOP DRILLED. FLAME CUTTING IS NOT ACCEPTABLE

ECOSPAN SOLUTIONS INC.
 ECOSpan Solutions Inc.
 7105 -104 Street
 Edmonton, Alberta T6E 4B7
 Ph: (780)432-2490
 Fax: (780)432-2491
 www.ecospan.ca

△			
△			
△			
△			
△			
△	2009-03-17	ISSUED FOR CONSTRUCTION	CW
REV	DATE	REVISIONS	BY

PERMIT TO PRACTICE
 ECOSPAN SOLUTIONS INC.
 Signature _____
 Date _____
 PERMIT NUMBER: P10308
 The Association of Professional Engineers,
 Geologists and Geophysicists of Alberta

DESIGNER

 DATE _____
 STREAM _____

TRANSPORTATION SYSTEM MANAGEMENT INC.

 STANDARD SIGN TRUSS
 MODIFIED SIGNBOARD
 CONNECTION DETAIL

DEPARTMENT BAR CODE	DATE	STREAM	LOCATION	HIGHWAY	FILE	SHEET	DRAWING
	2009-03-13					1 OF 1	SK-02